

As seen in the  
April 2012 issue of

 AMERICAN  
**art** COLLECTOR



## UPCOMING SHOW

*Up to 25 works*

March 29-April 17, 2012

Bonner David Galleries

7040 E. Main Street

Scottsdale, AZ 85251

(480) 941-8500

• SHOW LOCATION SCOTTSDALE, AZ



# GAIL MORRIS

## Luminosity



California artist Gail Morris decided to expand outside her comfort zone of square landscapes and experiment with a 2:1 ratio format. Her latest body of work will feature several of these tall narrow paintings coupled with long horizontals.

"These paintings are fresh and exciting to me because I have been playing with scale and format and I have been working on new ways of organizing spatial relationships," explains Morris. "I love to introduce a strong diagonal into my landscapes, either through water elements or roads, or simply the trees and hills themselves. Many of the paintings this year are more abstract. Some have a hard edge to them while others are soft, but they all originate in real places that I have been to."

Bonner David Galleries will present Morris' new series in a solo show titled *Luminosity*, which opens Thursday, March 29, 6-9 p.m., with the artist present. A special collectors' dinner is being planned at Binkley's Restaurant in Cave Creek, Arizona, on March 28 with the artist.

Based on her travels to Arizona, Utah, Northern New Mexico, the Pacific Coast, and Hawaii, this grouping covers a diverse range of landscapes. Included are some small intimate scenes, like *Bushes*, that make you stop and appreciate something simple that grows along the roadside, mixed with big-impact pieces, like *Sky Mountain Trees*, that jump off the wall, because of the colors and the format and the composition.

"I hope that visitors and collectors experience a sense of being in the landscape, feeling the warmth of a hot summer day or the chill of the fog as it rolls in across the beach," says Morris. "The name of this show is *Luminosity*. So it is about the effects of light and atmosphere. It is also about the idea of being luminous in our own lives—reflecting beauty and positivity." •

For a direct link to the  
exhibiting gallery go to



[www.americanartcollector.com](http://www.americanartcollector.com)

## Price Range Indicator

Our at-a-glance Price Range Indicator shows what you can expect to pay for this artist's work.

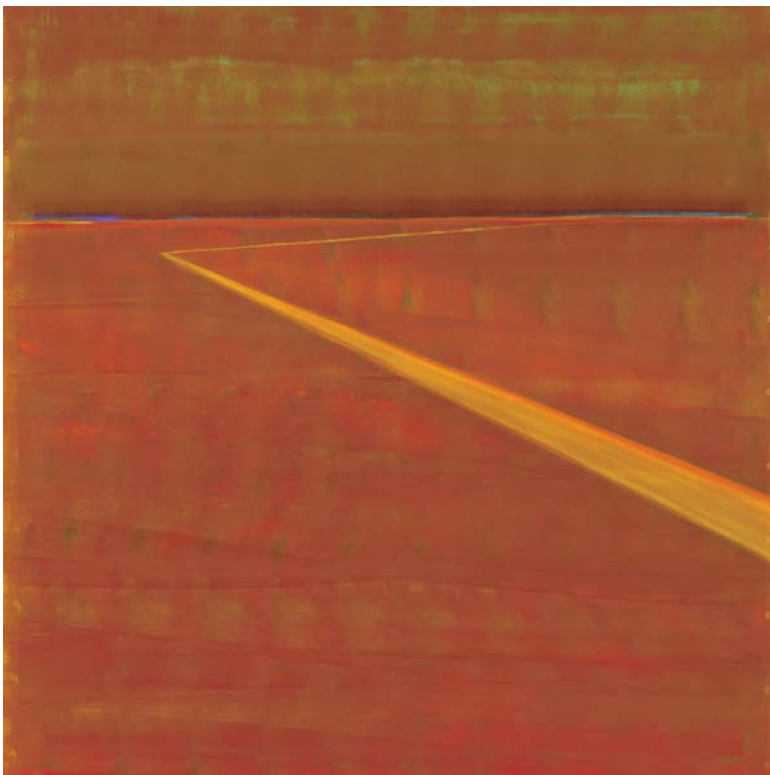
	Small	Medium	Large
2008	\$2,400	\$5,400	\$11,000
2010	\$1,400-\$3,200	\$4,000-\$7,200	\$9,500-\$14,000
2012	\$1,400-\$4,000	\$4,000-\$8,500	\$9,500-\$16,000



SKY MOUNTAIN TREES, OIL ON CANVAS, 72 X 36"



SAN GERONIMO, OIL ON CANVAS, 30 X 40"



### *The Collector Says . . .*

"Gail Morris' hand is unhesitant as she composes her works, color-fields of strong or soft slices, and wedges arranged into landscapes, with sky and land alternating as the principal element. We in the arts tend to mention precursors and hers could be...the cultural osmosis of Milton Avery, even though it might never have entered her mind. Morris' elegant art keeps getting better."

— *Reynold C. Kerr, Director & Principal Curator, Kerr Museum Productions, New York*

ANCESTOR SPIRITS, OIL ON CANVAS, 48 X 48"